



West Michigan Woodworkers Guild

December 2019

Newsletter

President's Corner

By Les Derusha

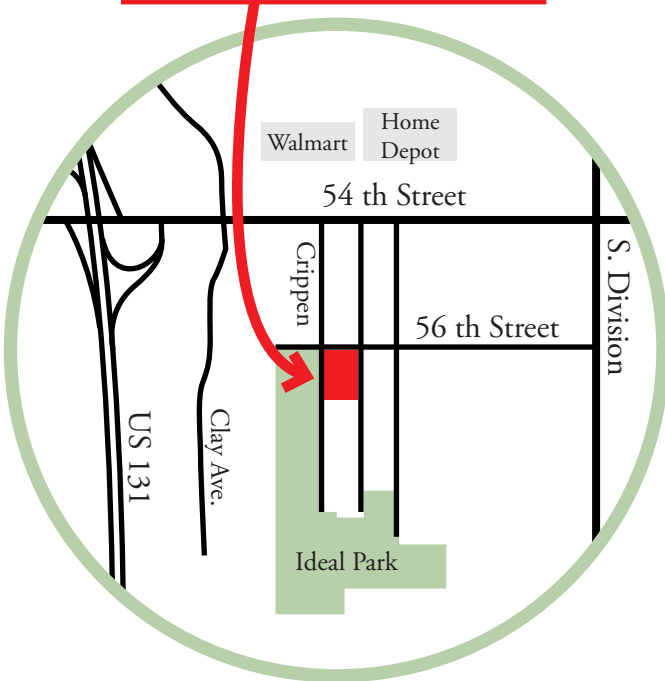
Next Meeting

Tuesday, December 10, 2019

7:00 PM to 9:30 PM

Ideal Park Christian Reformed
Church Activity Center

320 56th Street SW, Wyoming MI



When you work near the ceiling of your shop do you notice any fine sawdust? If you don't I'm guessing your shop isn't used much. The greatest generators of this sawdust are your saws, routers and sanders, any tool that creates fine sawdust. How does it get there, through the air, the same stuff you breath. What will it do to you?

COPD - Chronic Obstructive Pulmonary Disease is an umbrella term used to describe progressive lung diseases including emphysema, chronic bronchitis, and refractory (non-reversible) asthma. This disease is characterized by increasing breathlessness. This is something usually associated with Coal miners. News Flash!, it also happens to woodworkers! This dust settles in your lungs and the problems begin.

How to protect yourself : use a dust mask while cutting and sanding, particularly on exotic woods and wood products that contain resins, like MDF. Also spraying creates stuff that shouldn't be in your lungs.

Find a mask you will wear, if it's uncomfortable or bulky or difficult you probably won't use it. Find one you can live with and use it. Store it in your shop where it's convenient and visible. Remember, you don't want to die wondering where your next breath is coming from.

You don't need to be a member to attend.

Come to the next meeting and learn.

Bring a friend to the next meeting!

December 10, 2019 Meeting agenda

Welcome to guests & returning members

Guild business discussion

- Membership dues reminder \$20 now or \$25 after January 1, 2020.

Member Show & Tell

- Two minute limit per project.

Cool Tools with Dale Smith

Holiday Pizza Party

Short break

Raffle Drawings

Demonstrations — Marquetry by Phil Miclea

marquetry noun

mar-que-try | \ 'mär-kə-trē \

variants: or less commonly *marqueterie*

Definition of *marquetry*

: decorative work in which elaborate patterns are formed by the insertion of pieces of material (such as wood, shell, or ivory) into a wood veneer that is then applied to a surface (as of a piece of furniture) *From Merriam-Webster.com

Have you ever seen detailed wood inlays and wondered how it is done?
Ever wonder what the difference is between Intarsia, Marquetry, and Parquetry?
Ever heard of Louis Cubes, Oyster Shells, or Packet Marquetry?

Phil Miclea will be demonstrating some of these fabulous techniques as well as talking about the differences between them.

This should be a very informative presentation that you won't want to miss!

Upcoming presentations - January 2020

Drawings and Plans by Steve DeVries

Time in the workshop is too limited to waste it on poor quality plans . . . but with all the pretty pictures and fancy 3D graphics these days, how can you tell which plans are actually good and not just eye-candy?

Come to the January meeting where designer and author S.G. DeVries will show you how to spot good and poor quality plans before you cut any boards or waste any money.

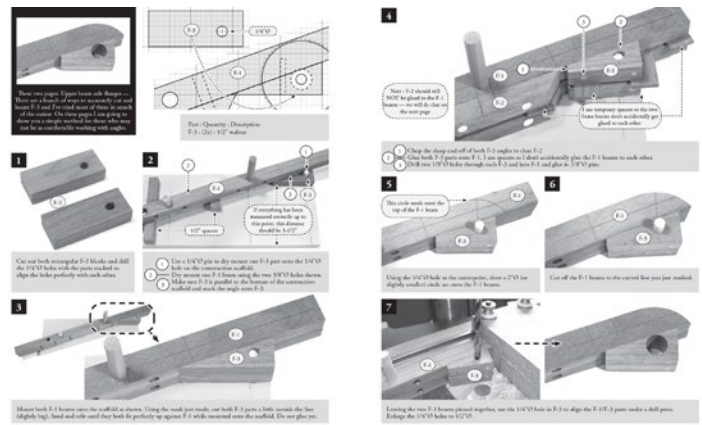
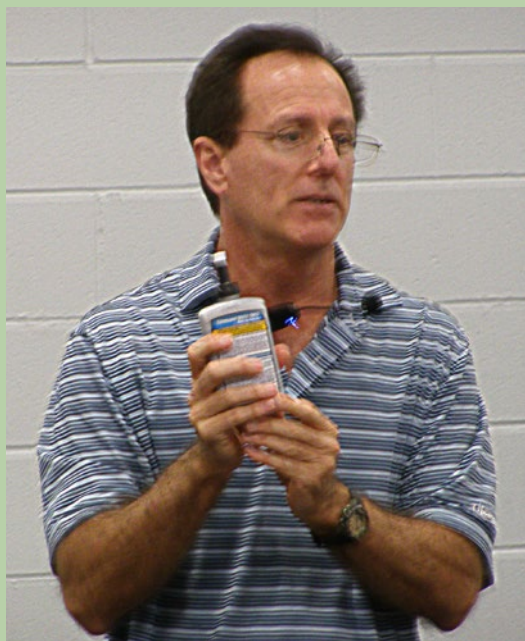


Image from "The BIG Truck" plans, by S.G. DeVries



Summing up Bob Behnke's presentation about wood glue feels a bit like trying to describe the Grand Canyon to someone who has never even seen a picture of it.

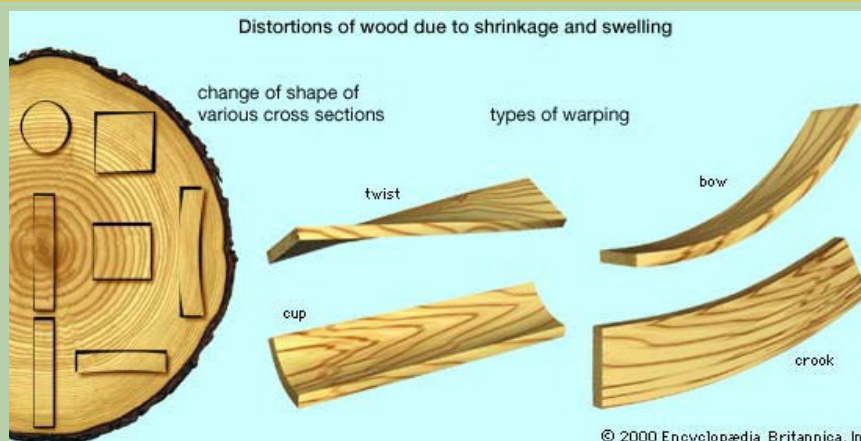
Below are a few reminders of some of the not-often-thought-of aspects of gluing that we tend to forget about in the day-to-day work in the shop.

One of the most important things that affects how we glue wood is understanding that glue does not bond pieces of wood to each other. The glue bonds to the cellulose fibers on either side of it, then hardens. We perceive this as sticking two pieces of wood together, but in reality they remain two independent pieces of wood with a thin layer of glue separating them.

Five aspects of successful glue-ups:

1. Do a dry fit.
2. Prepare the glue and accessories
3. Prepare the clean up
4. Do the gluing
5. Allow for drying/curing time.

Knowing and testing in advance how you are going to clamp something is often overlooked. Setting up a clamping arrangement will take far longer than the glue-up itself. The last thing you want is wet glue and to be scrambling around for how to hold it in position while it dries.



© 2000 Encyclopædia Britannica, Inc
Image from the Encyclopædia Britannica, 2000

Wood warps when it absorbs moisture, whether that comes from rain, the ground, or from the glue. Understanding how wood warps will aid in successful glue-ups.

As a model builder, this is especially important when gluing thin pieces. Glue moisture can bend a 1/32" thick piece of wood almost in half so knowing how to clamp it is essential.

Guild clothing update

By Mitch Hooglund

Guild shirts and hats are now available for ordering. Take a look below at the available options and prices. Ordering sooner rather than later will help us get a handle on the order size.

Mitch Hooglund will be handling this process so if you want to write a check, don't make it out to the Guild, talk with Mitch.



Long Sleeve T-shirt

\$15



Short Sleeve Pocket T-shirt

\$13



Washed Pigment Dyed Cay with Patch

\$15

*Please note the cap will have an embroidered logo, not a sewn-on patch.



Sport-Tek Polo

\$20

November meeting Cool Tools

By Dale Smith



Accordion applicator image from Amazon.com



GluBot image from Rockler.com



Silicone brushes image from Woodcraft.com



Glue syringe image from Woodriver.com

Silicone brushes, accordion style applicators, and even glue syringes can place glue with precision in exactly the place you need it. Silicone rollers, GluBot bottles, specialty wrapping tape, and carbide scrapers make gluing larger projects easier, and easier to clean up.

Sometimes we don't even know that the tool we need already exists until someone shows us. Thanks Dale!



Silicone roller image from Amazon.com



Titewrap tape image from Amazon.com



Woodpeckers carbide glue scraper image from Amazon.com

None of the products listed represent an official endorsement of the West Michigan Woodworkers Guild. They are merely items that different Guild members use and thought might be useful for others. The WMWWG has not solicited or received any compensation for any of the mentioned products.

Advertisements

By Steve DeVries

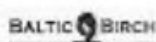
When reading a newsletter or magazine, or even a web-page it is easy to let our eyes just skip over advertisements. There are so many things in the world today that are shouting for our attention that our brains just filter out everything except what we are focusing on.

We install pop-up blockers on our phones, skip the ads on YouTube as soon as it will let us, go get a snack when television ads come on, throw away the flyers wedged into the screen doors of our houses, and the list goes on of things we do to avoid the extra noise.

Chances are you have probably done the same thing with the advertisements that are in our newsletter. Now, I am not going to tell you to click on every link and buy something from every store, but I would ask that you take a minute to at least look at the companies that work with us month-after-month, year-after-year. We might think “well, that is some giant corporation and everyone knows giant corporations are evil!” but we tend to forget that even the largest corporations are made up of individual people that live and work near us.

So the next time you need wood, or tools, or supplies, check out some of our partners, you might be surprised at just how close help is.

(And no : No one is paying me to say this.)



Visit Our New Walk-in Area!

3056 Walker Ridge Drive NW, Suite 'A'
Grand Rapids, MI 49544

616-784-9800

888-826-5528 Hardwoods-Inc.com

10% off listed price to those who show membership card.

20% off all screws for the month of December!

Chris Powers

Warehouse/Inside Sales

616-784-9800

Cpowers@hardwoods-Inc.com

EST 1928
WOODCRAFT®

4265 28th Street SE
Grand Rapids, MI 49512
616-975-9663

Get a free monthly flyer which highlights their Product Specials, Training Classes and in Store Demonstrations.'

To receive free mailers and catalogs, contact WOODCRAFT at the address shown above or email the Grand Rapids Woodcraft Store Manager.
woodcraft550@gmail.com

TONTIN

HARDWOODS & MILLWORKS

Retail & Wholesale Lumber Sales

565 Godfrey SW

Grand Rapids, MI 49503

Jeremy Stokes

General Manager

616-774-9332

jeremy@tontingr.com

www.tontingr.com

Craft Supplies USA

THE WOODTURNERS CATALOG

Woodturnerscatalog.com

1-800-551-8876

Provo, Utah 84606

Econaway Abrasives
Producing Top Quality Abrasive Products Since 1953

Sanding Belts and Abrasives

Jim Schultz

Phone : 616-846-2550

Grand Haven, Michigan

<http://www.econoway.com/>

Special Pricing for Guild Members!

Need a Nametag?

If you have been to a Guild meeting and seen the fancy wooden nametags some people have, you may have wondered : Where can I get one of those?

Talk to Les Derusha and he will set you up. He can be contacted at a meeting or at :

President@westmichiganwoodworkers.org



616-534-0701
800-526-7308
616-534-7221 FAX

TUBERGEN
Cutting Tools, Inc.
5252 Division Ave. S., Kentwood, MI 49548

www.tubergen.net sharp@tubergen.net

Web information

West Michigan Woodworkers Guild Board of Directors

President - Les Derusha
President@westmichiganwoodworkers.org

Vice President - Dale Smith
ahumanoid@hotmail.com

Secretary - Chris Taylor
taylor.christopher.james@gmail.com

Treasurer - Case Vander Maas
case.vm@gmail.com

Program Director - John Pflug
johnpflug2@gmail.com

Newsletter Editor - Steve Devries
newsletter@westmichiganwoodworkers.org

Guild Contact - Tom McDonald
information@westmichiganwoodworkers.org
616-706-8057

Board Members at Large
Patti Dooley
Rosepedal27@comcast.net

Greg Quist
Gquist43@gmail.com

Wayne Veneklasen
wvenekla@att.net

Jim Jakosh
jcj7815@att.net

Mltch Hoogland
mitch.hoogland@gmail.com

The Guild's Facebook page :
www.facebook.com/groups/wmiwwguild

The Guild's website :
www.westmichiganwoodworkers.org



SHERWIN-WILLIAMS®

Gustavo Diaz, Area Sales Manager
4499 Ivanrest Avenue, SW
Grandville, MI 49418
616-249-8137
sw1757@sherwin.com

FESTOOL®

Tools for the toughest demands

Build something awesome

Step-by-step plan books for the coolest wooden toys in the world
by S.G. Devries

Available at
amazon



The BIG Truck Plans



The BIG Steam Roller Plans



The BIG Dozer Plans

All plan books include scale drawings of every part, hundreds of procedural photographs, and complete instructions.